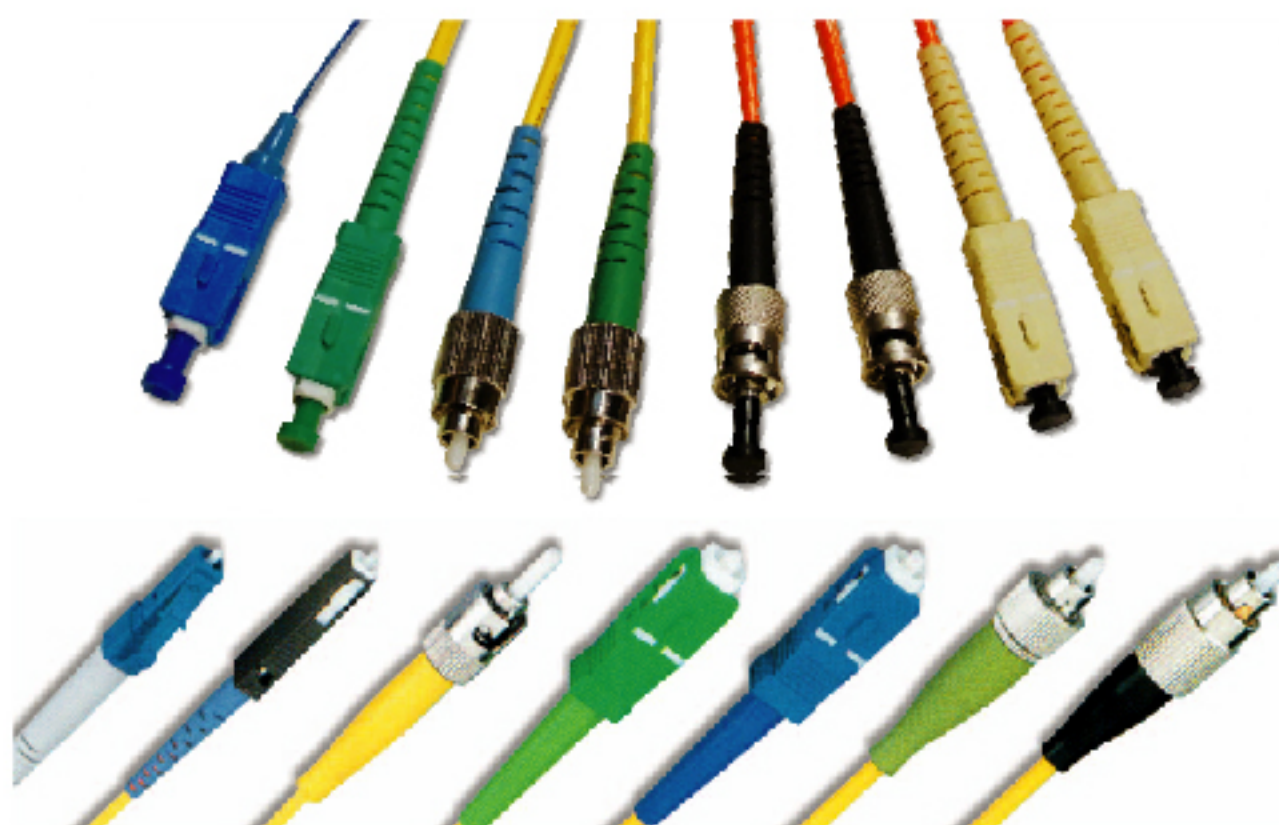


# • Optical Patch Cord



## Features

1. Low Insertion Loss
2. Low Backreflection Loss
3. Various Connector Type Available
4. Compact Size, Light Weight

## Application

1. Fiber Optic Telecommunication
2. Optical Network Equipments
3. CATV
4. High Speed Transmission Systems
5. FTTH

## Specification

Fiber Mode	SM		MM
Type	FC, SC, ST, LC, MU		FC, SC, ST, LC, MU
Ext. Diameter(mm)	0.9, 2.0, 3.0		0.9, 2.0, 3.0
Ferrule Type	PC	APC	PC
Insertion Loss(dB)	≤0.2	≤0.2	≤0.2
Return Loss(dB)	≥50	≥60	-
Core Eccentricity(μm)	-		
Curvature Eccentricity(μm)	-		
Operating Temperature(°C)	-40~+75		
Storage Temperature(°C)	-55~+85		